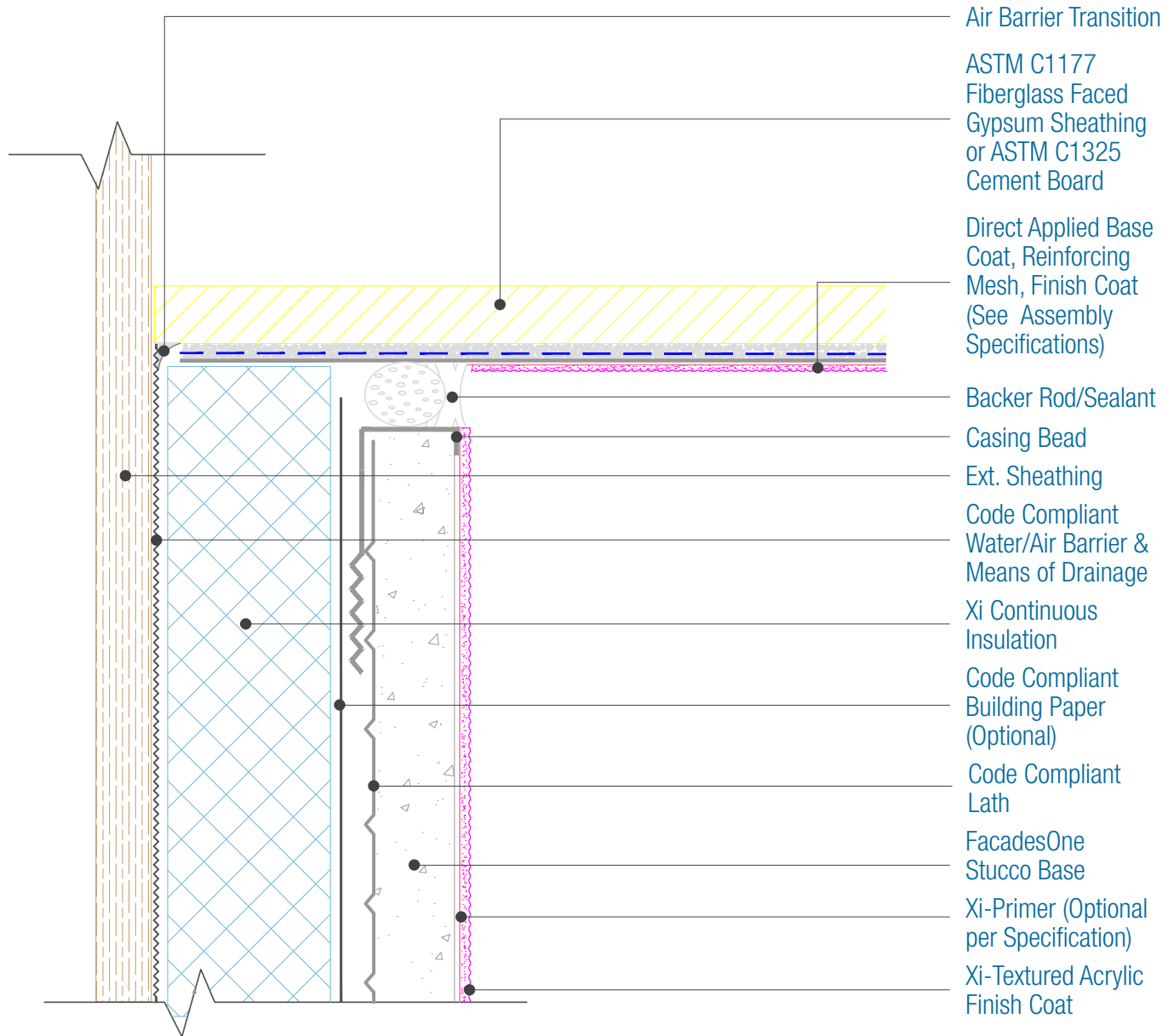




15262 Capital Port  
 San Antonio, TX 78249  
 1-800-611-6602  
 facadesxi.com

# FacadesOne Xi-Series Assembly Termination into Direct Applied Soffit

Date: 06-15-2020 | Detail: F1XI.IV.1 v1



- Air Barrier Transition
- ASTM C1177  
Fiberglass Faced  
Gypsum Sheathing  
or ASTM C1325  
Cement Board
- Direct Applied Base  
Coat, Reinforcing  
Mesh, Finish Coat  
(See Assembly  
Specifications)
- Backer Rod/Sealant
- Casing Bead
- Ext. Sheathing
- Code Compliant  
Water/Air Barrier &  
Means of Drainage
- Xi Continuous  
Insulation
- Code Compliant  
Building Paper  
(Optional)
- Code Compliant  
Lath
- FacadesOne  
Stucco Base
- Xi-Primer (Optional  
per Specification)
- Xi-Textured Acrylic  
Finish Coat

**NOTES:**

1. There must be continuous airtightness over the entire building enclosure, where required by code. The actual project detail must show this continuity.
2. For full assembly options, materials and placement of materials refer to the specific FacadesXi System specifications.
3. Drainage is required per the current Evaluation Report. See Detail I.3 for material options.

**DISCLAIMER:** FACADESXI details are recommendations that should be used for guidance only. There may be equivalent means of installation that are not shown in FACADESXI assembly details. All FACADESXI products shall be installed in accordance with FACADESXI product datasheets and all applicable building codes and industry standard practices. The design, engineering and final details incorporating any FACADESXI product are the sole responsibility of the project design professional. FACADESXI is not responsible for determining the acceptability and/or applicability of any FACADESXI product or detail for any specific project or condition. FACADESXI disclaims all liability for improper installation, workmanship, or design by a third-party. EXCEPT FOR ANY EXPRESS REPRESENTATIONS AND WARRANTIES BY FACADESXI, ALL IMPLIED WARRANTIES OF ANY KIND, INCLUDING BUT NOT LIMITED TO WARRANTIES OF MERCHANTABILITY OR FITNESS FOR A PARTICULAR PURPOSE OR COMPLIANCE WITH LAWS OR GOVERNMENT RULES OR REGULATIONS APPLICABLE TO THE PROJECT, ARE HEREBY DISCLAIMED. FACADESXI's website should always be consulted for the latest version of any details and/or product information. Contact FACADESXI for any technical assistance.